

Bitzer 6H-25.2Y-40P (x4) Cool/freeze installation

Specifications

Marca	Bitzer
Tipo	6H-25.2Y-40P (x4) Cool/freeze installation
Refrigerante	Freon
kW at -5°C/+40°C	298.4
kW at -10°C/+40°C	246
kW at -20°C/+40°C	161.2
kW at -30°C/+40°C	98.8
kW at -40°C/+40°C	53.6
Piston Descargador	✓
Control de capacidad	✓
Sober Bancada	✓
Presostatos	✓
Manómetros de Presion	✓
Panel de control	✓
Package / Rack	✓
Stock	1



Description

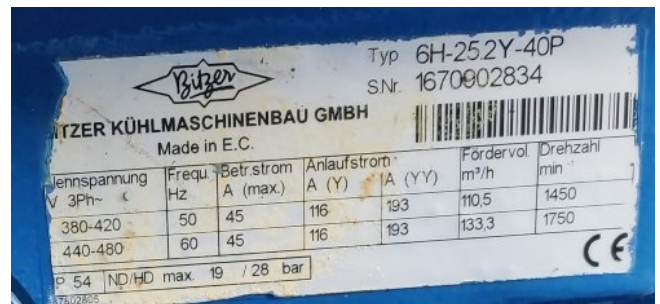
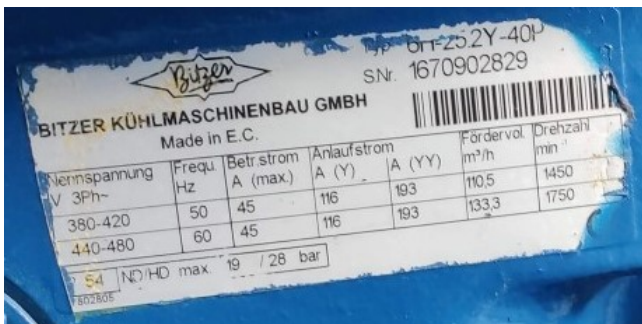
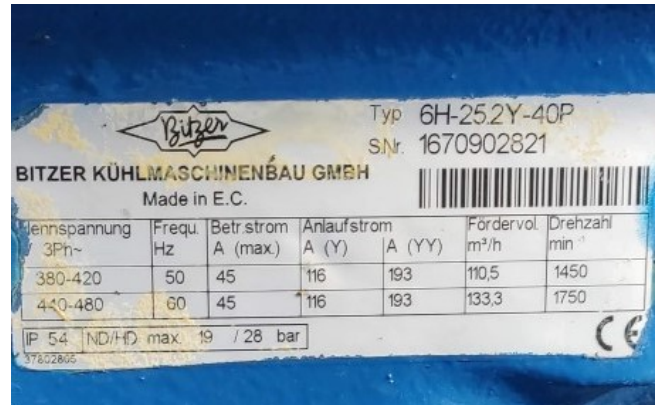
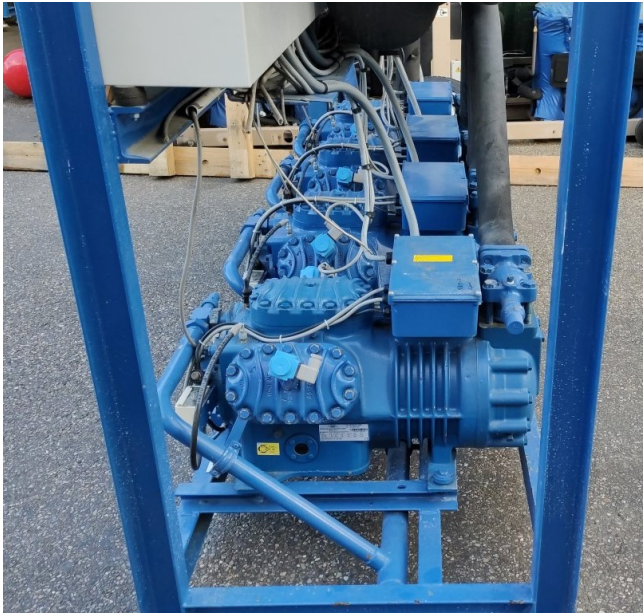
Used Bitzer 6H-25.2Y-40P (x4) Cool/freeze installation

Used but as good as new: complete Bitzer / Carrier cool / freeze unit build by Linde, consisting of the following main components: 4 cool/freeze Semi-hermetic Reciprocating Compressors type 6H-25.2Y-40P, electronic oil floaters, oil separator, central suction manifold and switch-board with complete control system. *Why choose for HOSBV? Were not only the largest used refrigeration specialist in Europe, but also, we deliver all equipment including an extensive test, warranty and industrial cleaning. *Optional we



can also perform a new paint job and
arrange the logistics.





Selection: Semi-hermetic Reciprocating Compressors

Input Values

Compressor model	6H-25.2V	Suction gas temperature	20.00 °C
Mode	Refrigeration and Air conditioning	Operating mode	Auto
Refrigerant	R404A	Power supply	400V-3-50Hz
Reference temperature	Dew point temp.	Capacity control	100%
Liq. subc. (in condenser)	0 K	Useful superheat	100%

Result

Q [W]	Cooling capacity	COP [-]	COPIER
Q _u [W]	Evaporator capacity	m [kg/h]	Mass flow
P [kW]	Power input	Q _p	Operating mode
I [A]	Current	th [°C]	Discharge gas temp. w/o cooling
Q _c [W]	Condenser Capacity (w. HX)		

tc	ts	-5°C	-10°C	-15°C	-20°C	-25°C	-30°C	-35°C	-40°C
30°C	Q [W]	87943	72553	59256	47812	38014	29678	22638	16741
	Q _u [W]	87943	72553	59256	47812	38014	29678	22638	16741
	P [kW]	23.5	22.1	20.6	18.83	16.94	14.95	12.89	10.81
	I [A]	39.7	37.6	35.2	32.6	29.8	27.9	24.2	21.5
	Q _c [W]	110268	93595	78807	65701	54108	43880	34886	27014
	COP [-]	3.74	3.28	2.88	2.54	2.24	1.99	1.76	1.55
	m [kg/h]	2209	1805	1462	1171	926	719	546	403
	Q _p	Standard	Standard	Standard	Standard	Standard	Standard	Standard	Standard
	th [°C]	70.7	77.4	84.5	92.1	100.2	109.1	119.0	130.1
	th [°C]	70.7	77.4	84.5	92.1	100.2	109.1	119.0	130.1
40°C	Q [W]	74665	61562	50196	40375	31933	24718	18595	13438
	Q _u [W]	74665	61562	50196	40375	31933	24718	18595	13438
	P [kW]	27.2	25.2	23.0	20.7	18.28	15.83	13.36	10.92
	I [A]	45.5	42.3	38.9	35.4	31.8	28.2	24.8	21.7
	Q _c [W]	100512	85490	72046	60026	49299	39753	31286	23811
	COP [-]	2.74	2.44	2.18	1.95	1.75	1.56	1.39	1.23
	m [kg/h]	2114	1723	1392	1111	873	672	503	362
	Q _p	Standard	Standard	Standard	Standard	Standard	Standard	Standard	Standard
	th [°C]	82.4	88.1	96.3	103.9	112.2	121.2	131.4	141.4
	th [°C]	82.4	88.1	96.3	103.9	112.2	121.2	131.4	141.4
50°C	Q [W]	50514	41135	32982	25960	19920	14765	10395	7095
	Q _u [W]	50514	41135	32982	25960	19920	14765	10395	7095
	P [kW]	27.8	25.0	22.2	19.31	16.43	13.59	10.83	8.19
	I [A]	46.4	42.1	37.7	33.3	29.0	25.1	21.6	18.1
	Q _c [W]	76911	64508	54069	44302	35529	27877	20682	14387
	COP [-]	1.82	1.64	1.49	1.34	1.21	1.09	0.96	0.83
	m [kg/h]	1635	1317	1047	818	623	460	322	222
	Q _p	Standard	Standard	Standard	Standard	Standard	Standard	Standard	Standard
	th [°C]	101.1	108.3	116.0	124.3	133.5	143.0	153.0	163.0
	th [°C]	101.1	108.3	116.0	124.3	133.5	143.0	153.0	163.0

-- No calculation possible (see message in single point selection)
*According to EN12900 (20°C suction gas temp., 0K liquid subcooling)

Application Limits 100% 6H-25.2